



Company: REDROCK MICRO

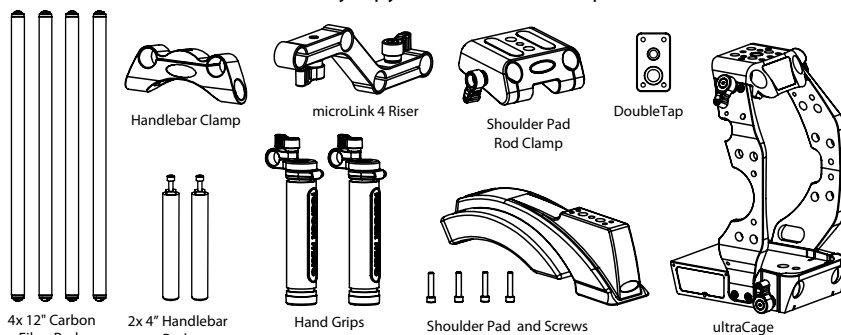
Pages: 1 of 1

Title: ultra eyeSpy for Canon EOS C300/C500 SETUP GUIDE

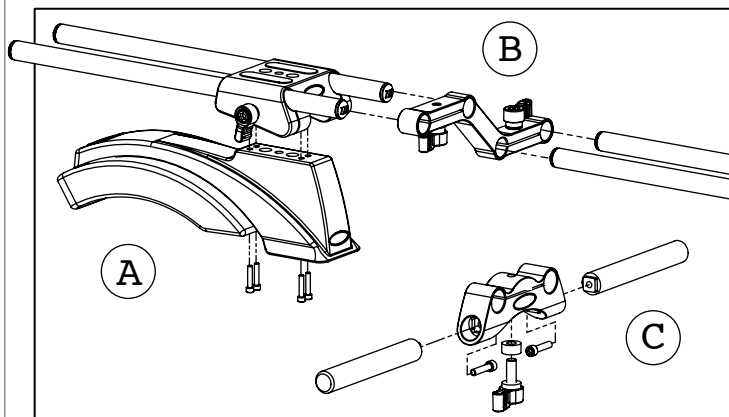
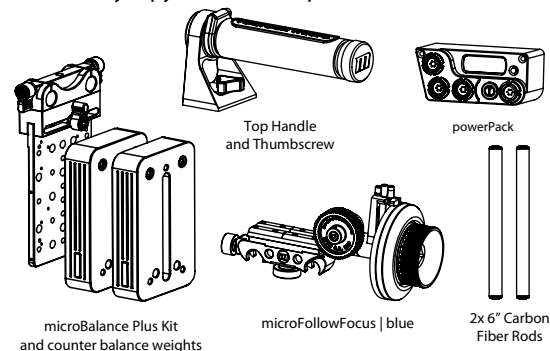
Scene: ultra eyeSpy BASIC and DELUXE Bundles

Date: 04.01.12

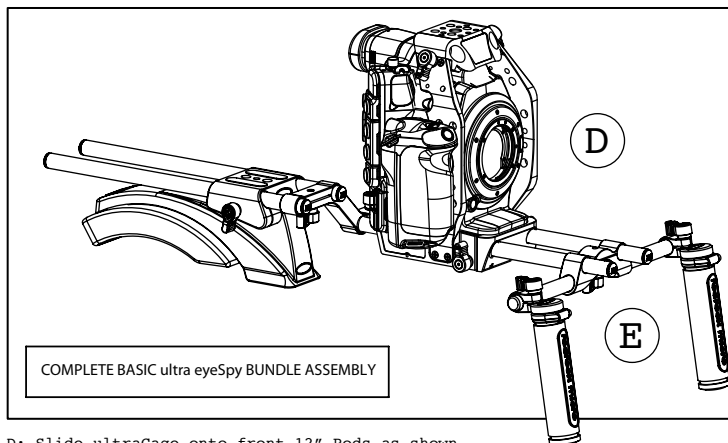
### ultra eyeSpy BASIC Bundle Components



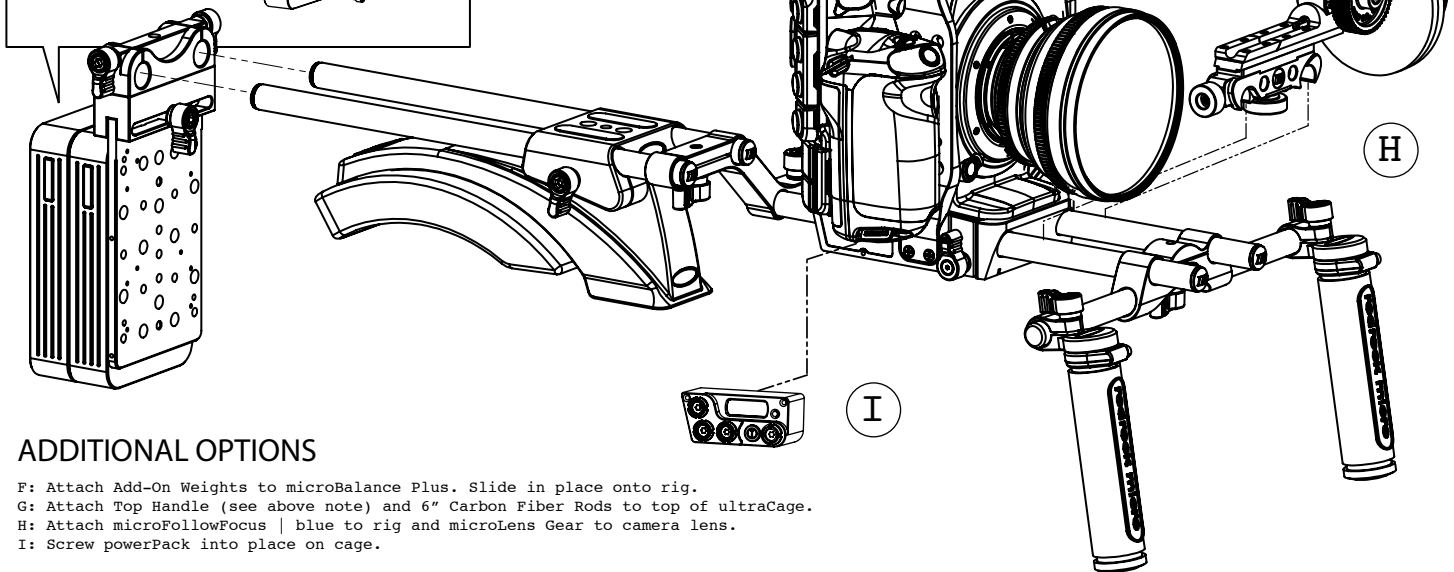
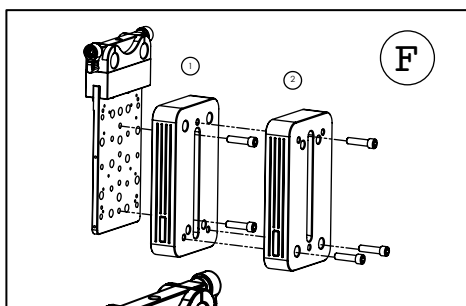
### ultra eyeSpy Additional Options



A: Attach Shoulder Pad to Rod Clamp using screws. Insert 12" Rods.  
B: Insert all four 12" Rods into microLink 4 Riser as shown.  
C: Remove blue knob from Handlebar Clamp. Attach 4" grip rods using screws. Replace blue knob.



D: Slide ultraCage onto front 12" Rods as shown.  
E: Add Handlebar and blue Hand Grips.



Note: when using Top Handle, Triangle Thumb screw replaces 1/4-20 x 3/8" screw at top of cage into camera.

### ADDITIONAL OPTIONS

F: Attach Add-On Weights to microBalance Plus. Slide in place onto rig.  
G: Attach Top Handle (see above note) and 6" Carbon Fiber Rods to top of ultraCage.  
H: Attach microFollowFocus | blue to rig and microLens Gear to camera lens.  
I: Screw powerPack into place on cage.

