



Company: REDROCK MICRO

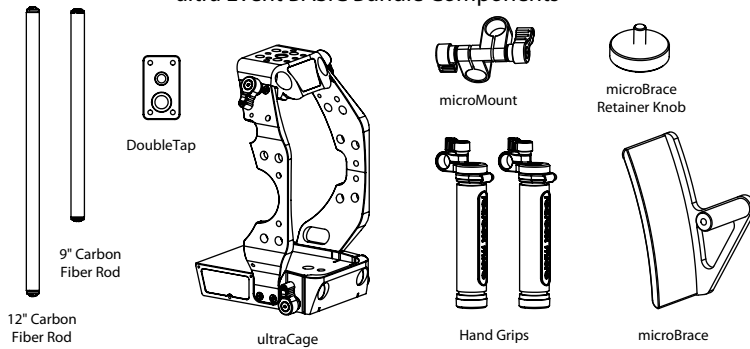
Pages: 1 of 1

Title: ultra Event for Canon EOS C300/C500 SETUP GUIDE

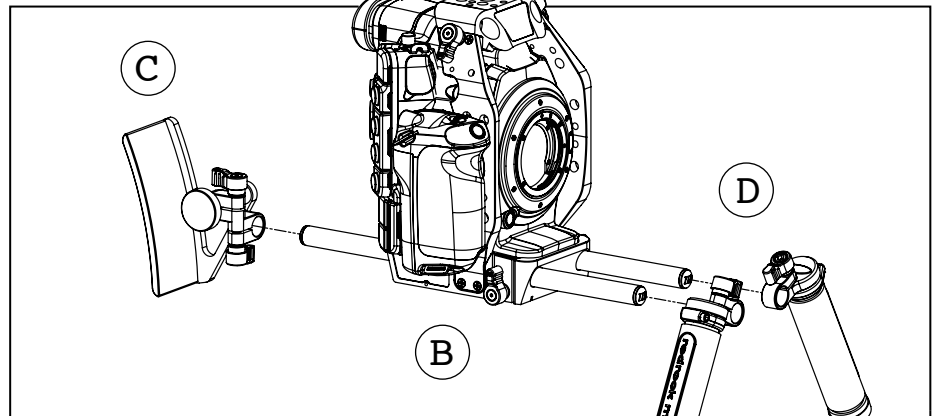
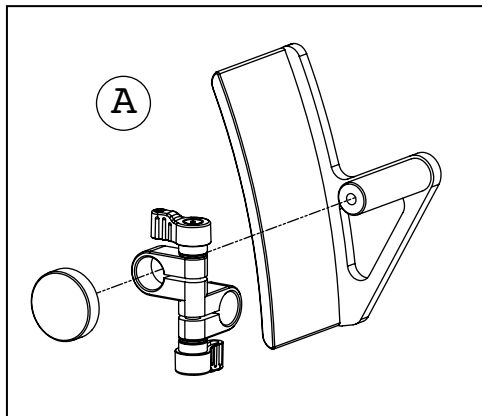
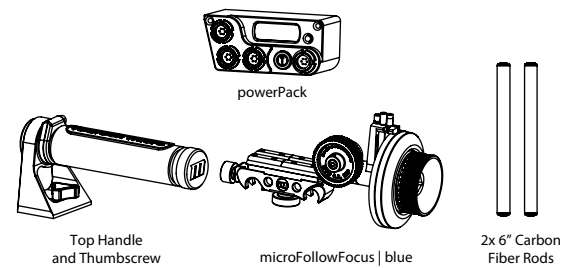
Scene: ultra Event BASIC and DELUXE Bundles

Date: 04.01.12

ultra Event BASIC Bundle Components



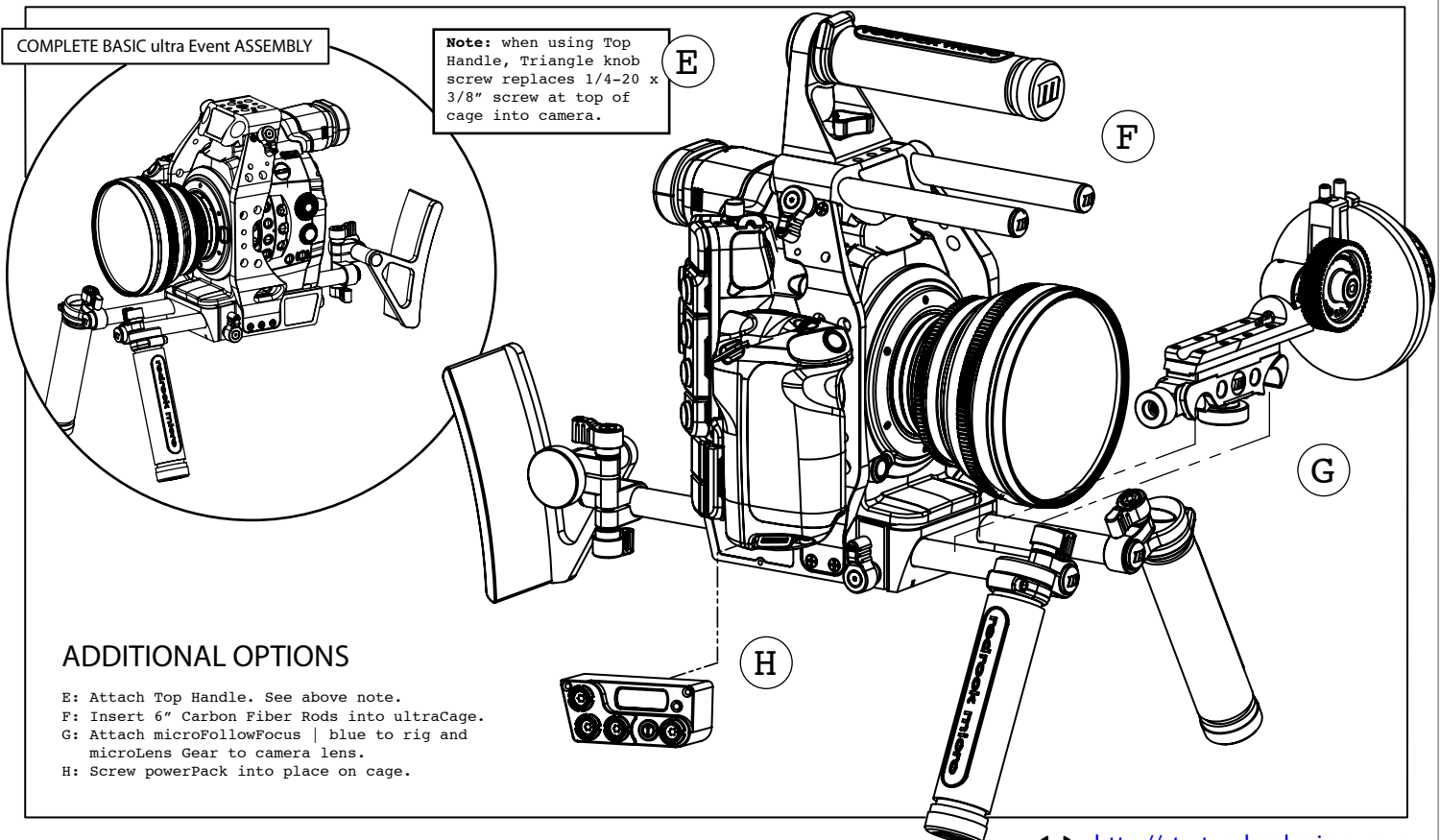
ultra Event Additional Options



A: Attach microBrace to microMount by tightening Retainer knob.
B: Insert 12" and 9" Carbon Fiber Rods into ultraCage as shown.

C: Tighten microMount with microBrace onto 12" Rod.
D: Add Blue Handgrips to both rods in front.

COMPLETE BASIC ultra Event ASSEMBLY



Note: when using Top Handle, Triangle knob screw replaces 1/4-20 x 3/8" screw at top of cage into camera.

ADDITIONAL OPTIONS

E: Attach Top Handle. See above note.
F: Insert 6" Carbon Fiber Rods into ultraCage.
G: Attach microFollowFocus | blue to rig and microLens Gear to camera lens.
H: Screw powerPack into place on cage.

