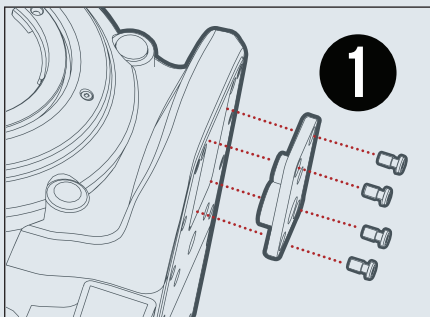
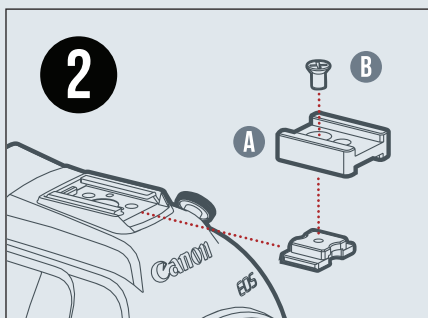


# INSTALL ULTRACAGE FOR CANON EOS CAMERAS

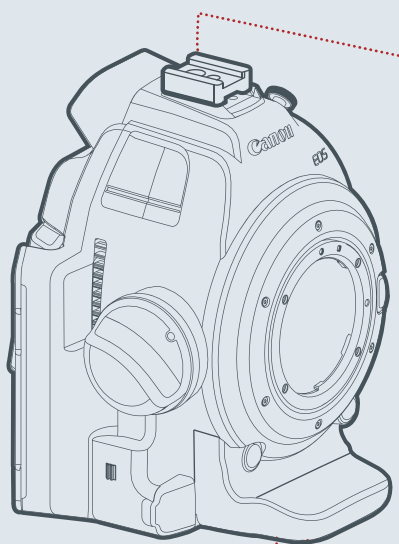


- 1.** Remove supplied DoubleTap plate from ultraCage bottom. Remove standard mounting plate from camera bottom. Replace with DoubleTap as shown using Canon plate screws.



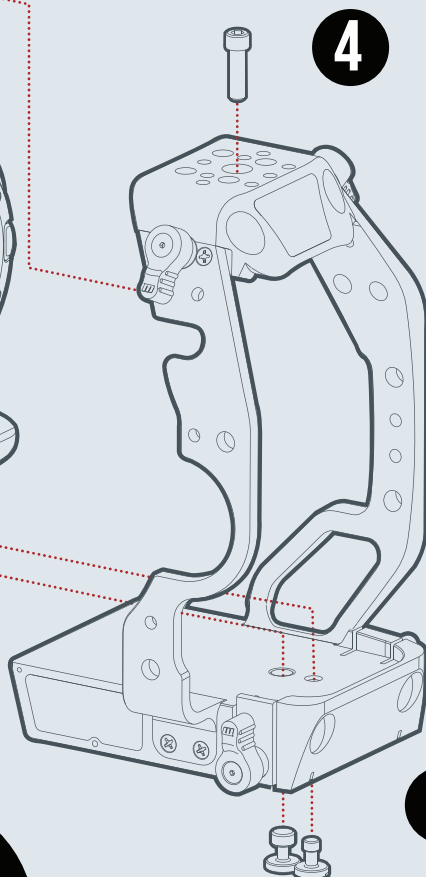
- 2.** If required, attach Shoe Clamp Adapter (A) for C100 camera. Position clamp in camera shoe mount as shown and tighten screw (B).

*Note: C300 mkII does not require Shoe Clamp.*



- 3.** Carefully slide camera into place in the ultraCage. Tighten both screws from underneath the cage into the DoubleTap plate.

- 4.** Drop screw into top of cage and tighten into camera top until secure. Do not overtighten.



<http://start.redrockmicro.com>  
Tutorials, forums, customer support