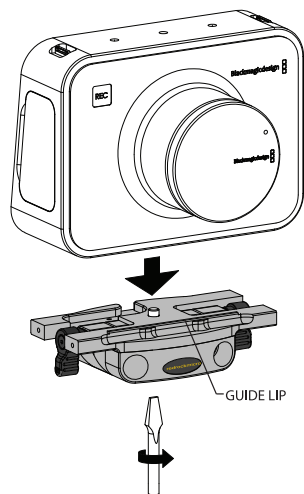
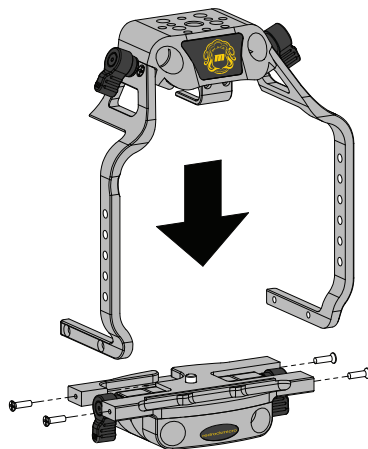


MOUNTING CAMERA TO ULTRABASE ONLY



- 1 Align camera with ultraBase as shown so that front of camera is flush with lip on baseplate.
- 2 Tighten camera screw from underneath baseplate into camera.

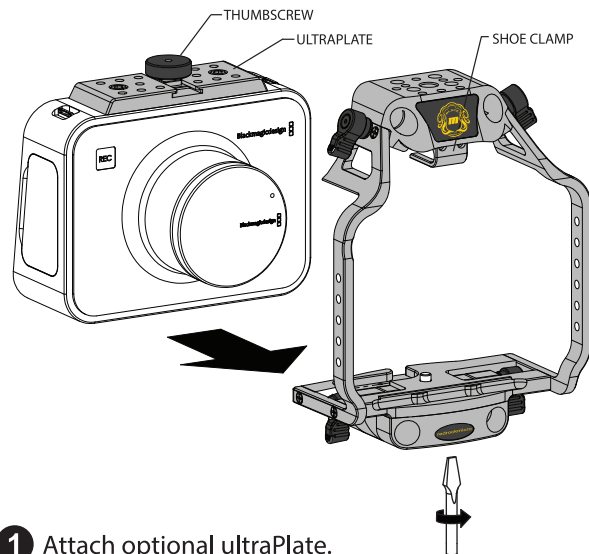
ASSEMBLING FULL CAGE



- 1 Align top of cage with ultraBase as shown.
- 2 Tighten 4 provided screws to secure sides of top cage with baseplate.

MOUNTING CAMERA TO FULL CAGE

(shown with optional accessories)



- 1 Attach optional ultraPlate.
(Installation guide included separately with product)
- 2 Attach optional Shoe Clamp to cage as shown.
(Installation guide included separately with product)
- 3 Slide camera into cage so the Thumbscrew slides over the Shoe Clamp and the camera sits flush with the front of cage.
- 4 Tighten camera screw from underneath baseplate into camera.
- 5 Tighten thumbscrew.



ULTRACAGE | BLACK FOR BLACKMAGIC DESIGN
CINEMA CAMERA Part # 8-131-0001



<http://start.redrockmicro.com>

Tutorials, videos, customer support