

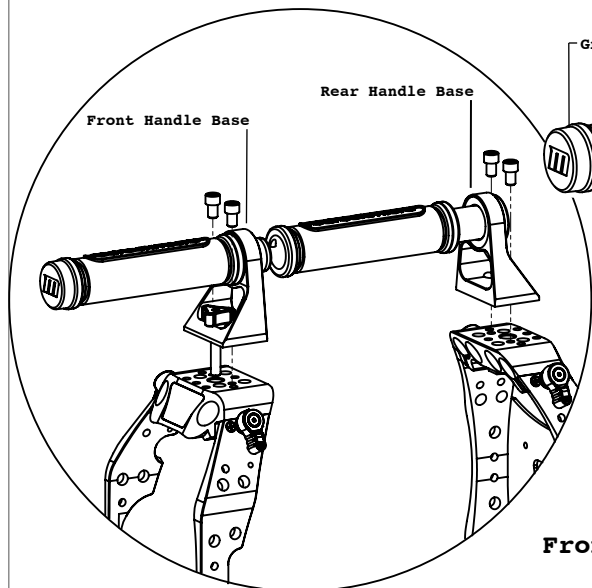


Company: REDROCK MICRO

Date: 4.1.12

Title: ultraCage | blue Professional Series

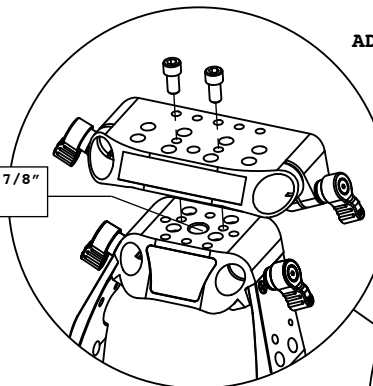
Scene: ultraCage Setup Guide for Various Cage Builds / Features



Front

Rear

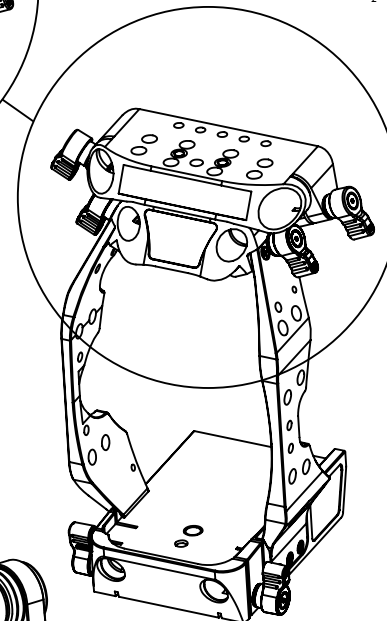
1/4-20 x 7/8" screw



ADDING 19mm CLAMP TO ULTRACAGE

Leave 1/4-20 x 7/8" screw in place.
Align 19mm clamp with top of ultraCage as shown. Secure with two 1/4-20 x 3/4" screws.

Tip: It is best to tighten the 15mm ultraCage clamp knobs before adding the 19mm clamp.

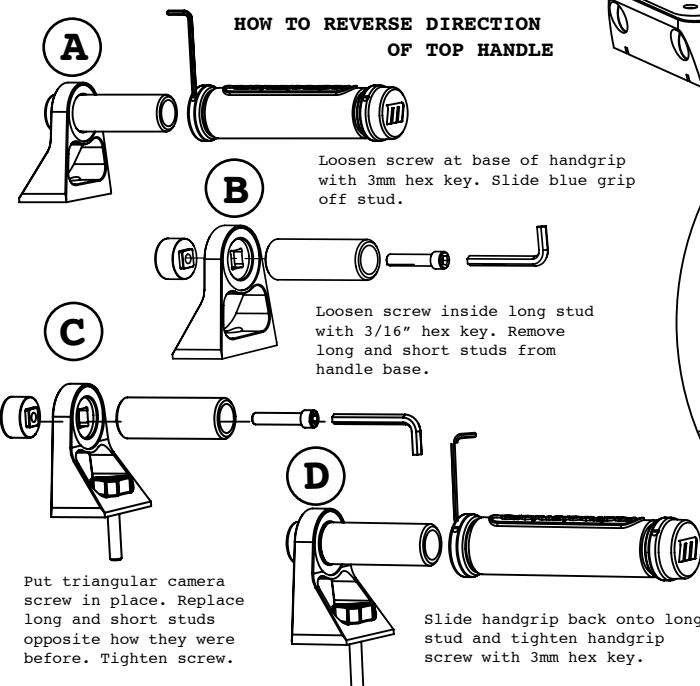


ULTRACAGE DOUBLE HANDLE

Front Handle Base has long stud in front, short stud in rear. Slide handgrip onto long stud. Tighten handgrip screw.

Rear Handle Base has long stud in front and M sticker in rear. Slide handgrip onto long stud, then onto short stud of front handle. Tighten handgrip screws.

Secure each Handle Base to cage with two 1/4-20 x 3/8" screws.



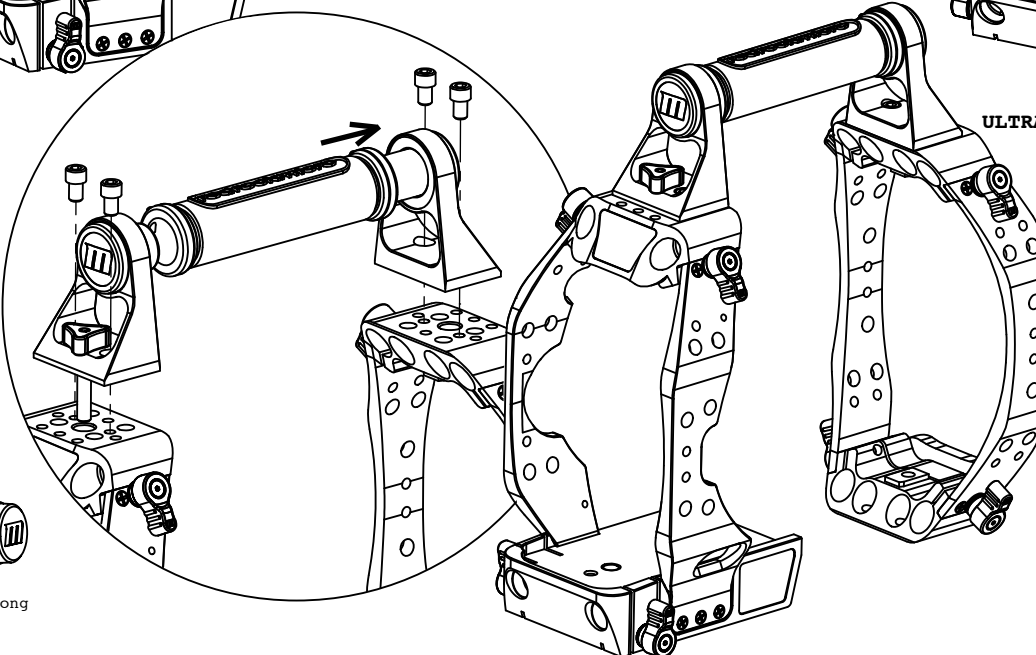
HOW TO REVERSE DIRECTION OF TOP HANDLE

Loosen screw at base of handgrip with 3mm hex key. Slide blue grip off stud.

Loosen screw inside long stud with 3/16" hex key. Remove long and short studs from handle base.

Slide handgrip back onto long stud and tighten handgrip screw with 3mm hex key.

Put triangular camera screw in place. Replace long and short studs opposite how they were before. Tighten screw.



ULTRACAGE TAPPED HANDLE

Front Handle Base has M sticker in front, short stud in rear.

Rear Handle Base has long stud in front and M sticker in rear. Slide handgrip onto long stud, then onto short stud of front handle. Tighten handgrip screws.

Secure each Handle Base to cage with two 1/4-20 x 3/8" screws.

create the cinema experience



<http://start.redrockmicro.com>
Tutorials, forums, customer support