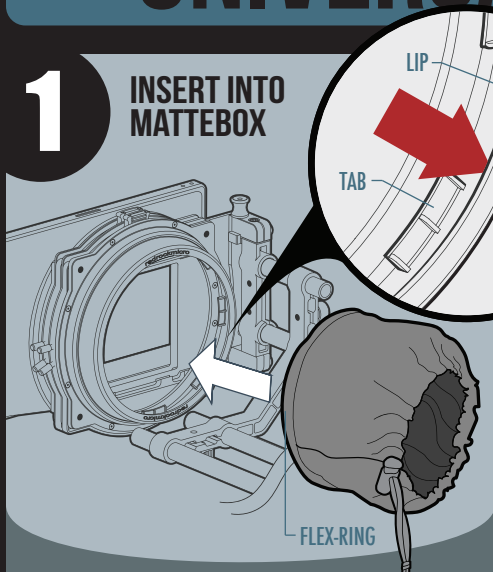


UNIVERSAL DONUT

1

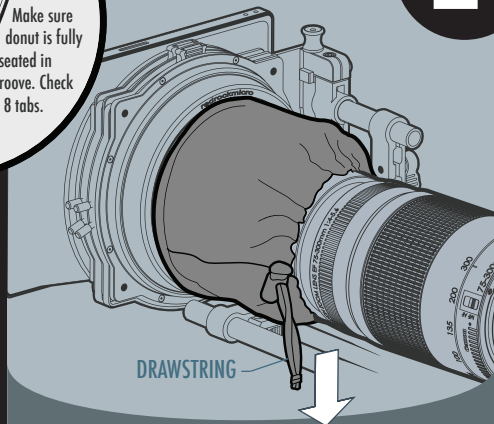
**INSERT INTO
MATTEBOX**



Insert the Donut's flex-ring into mattebox groove as shown, between the outer lip and inner tabs.

**TIGHTEN DRAWSTRING
ONTO LENS**

2



Position Universal Donut around outermost rim of your lens and pull the drawstring tight.



redrockmicro



<http://start.redrockmicro.com>
Tutorials, forums, customer support