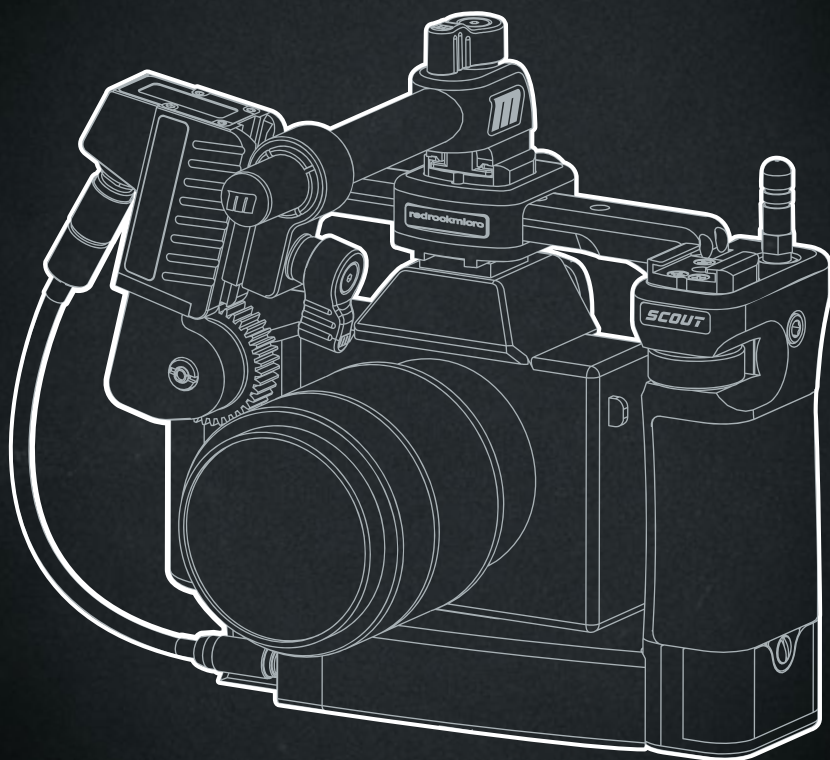


redrockmicro

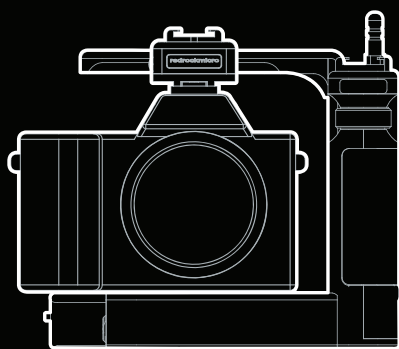
# SCOUT

**HS** **HX**



QUICK START GUIDE

# CONTENTS



## 3 CAMERA INSTALLATION

## 4 SHOOTING MODES

## 5 BATTERY POWER

## 6 MICROREMOTE SETUP

## 7 LENS CALIBRATION

## 8 GIMBAL USE



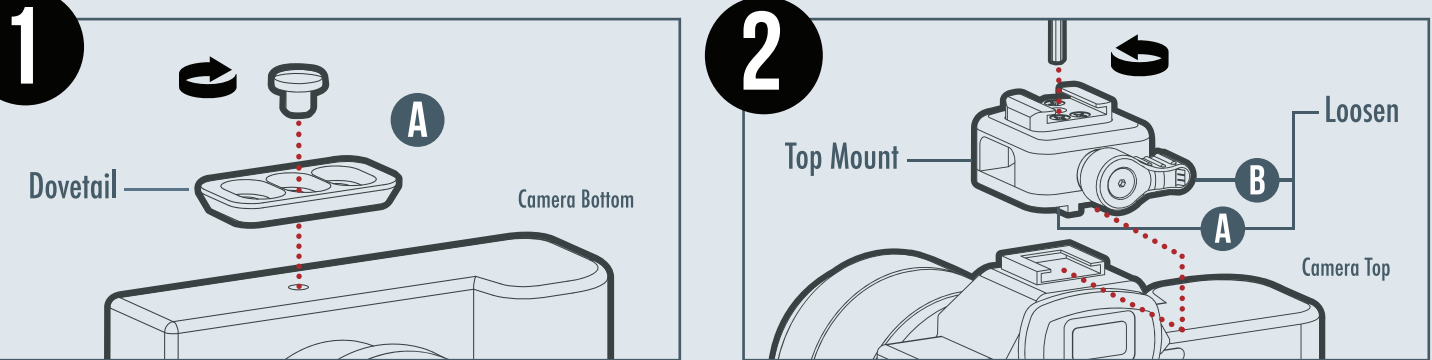
<http://start.redrockmicro.com>  
Tutorials, forums, customer support

**SCOUT**



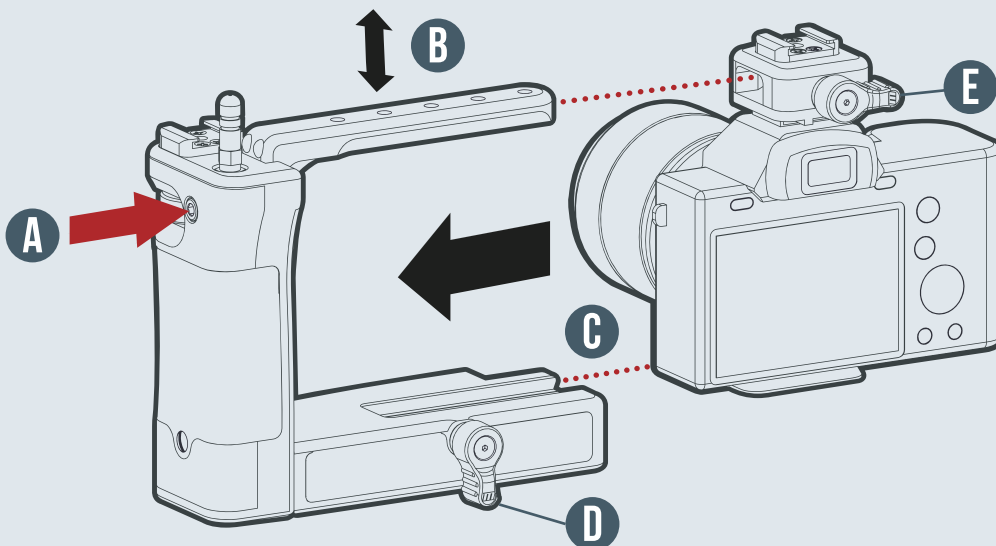
# CAMERA INSTALLATION

SCOUT IS FULLY ADJUSTABLE TO ACCOMMODATE MANY DIFFERENT CAMERA TYPES, POSITIONS, AND SHOOTING STYLES. THE FIRST INSTALLATION MAY REQUIRE SOME EXPERIMENTATION TO FIND YOUR PERFECT SETUP.

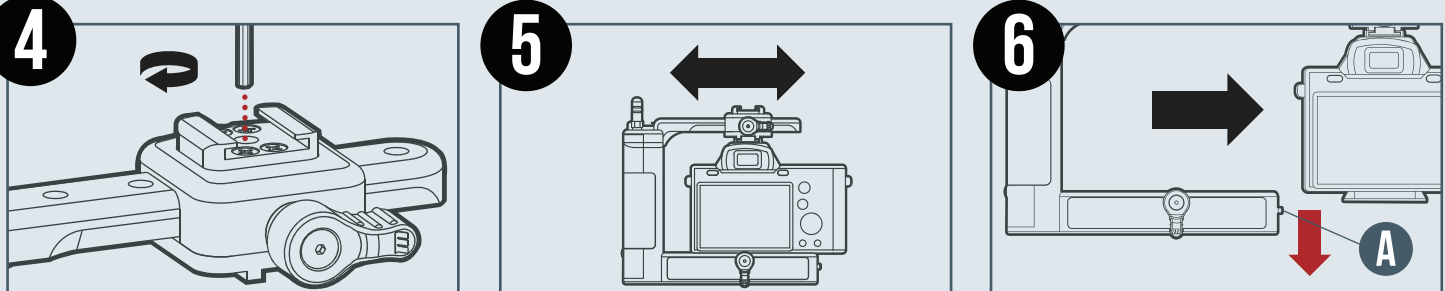


Install Camera Dovetail (A) onto the bottom of your camera as shown. Experiment with placement of the dovetail using the three slots, both left-right and front-back to achieve optimal balance and spacing for your camera. Make sure dovetail is square with camera, then tighten screw.

Use 3/32" hex wrench to loosen the bottom shoe plate (A) enough to slide the Top Mount into your camera's hot shoe. Avoid letting the bottom plate come off. With Top Mount installed on camera, SLIGHTLY tighten shoe plate (A). Loosen the Top Mount thumbscrew (B).



Use 5/32" hex wrench to loosen Adjustment Screw (A) so the Mounting Arm (B) can slide freely up and down. Slide camera into cage so that Top Mount slides onto Mounting Arm and Camera Dovetail slides into its groove (C). **If camera does not easily slide into cage, adjust Camera Dovetail position (SEE STEP 1).** Tighten thumbscrews (D) then (E) to align Mounting Arm. Tighten screw (A) to lock Mounting Arm, then loosen thumbscrews (D) and (E).



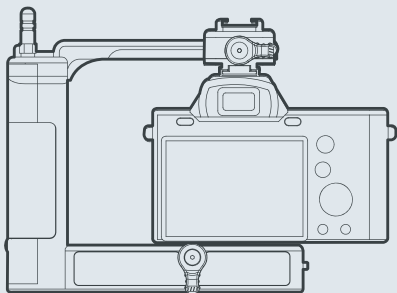
Center the Top Mount directly over a mounting hole on the Mounting Arm. Use hex key to tighten Top Mount shoe plate, securing it to the camera's hot shoe.

Camera should now slide freely left and right within the cage.\* Adjust camera to desired position, then tighten Top Mount/Dovetail Thumbscrews to lock into place.

To remove camera: loosen Top Mount/Dovetail Thumbscrews. Press down Dovetail Safety Lock (A) and hold while sliding out camera.

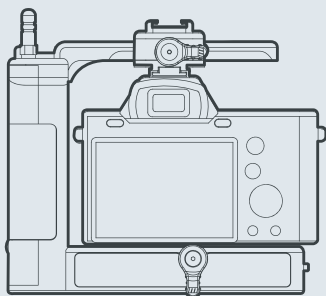
# SHOOTING MODES

SCOUT IS AN EXPERT AT ADAPTABILITY. CHOOSE ONE OF THESE THREE MODES AS A STARTING POINT.



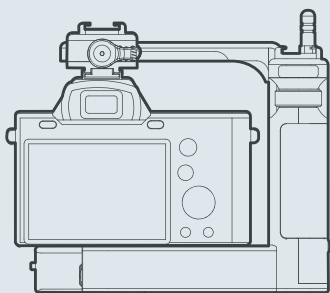
## EXPANDED MODE

A natural and balanced feeling rig perfect for handheld shooting, with one hand on the camera grip, the other on the Scout's grip.



## COMPACT MODE

Slide the camera in for a compact rig that fits in tight spaces like the DJI Ronin-M and MoVI M5. When used with optional rail mount, Compact Mode is also great for cinema-style rigs like shouldermount or studio.



## REVERSE MODE

Move the fingerwheel grip to the opposite side to control focus with your right thumb, and for completely open access to left-side camera ports. Reverse Mode can be used in Expanded or Compact Modes.

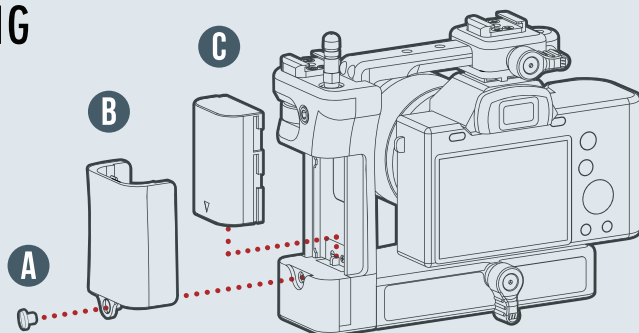


<http://start.redrockmicro.com>  
Tutorials, forums, customer support

**SCOUT**



## CHANGING THE BATTERY



The Scout operates on a standard Canon-style LP-E6 Lithium Ion battery (not included). To change the battery, loosen screw (A) completely and pull battery door (B) straight off. Point the battery (C) contacts downward and insert until it is fully seated. Replace battery door and tighten screw. The battery powers the Scout's internal Basestation for **Scout HX** users, and your external Basestation for **Scout HS** users (requires OS 4.0 or higher).

*Removing the battery is recommended during long periods of unuse (such as overnight) to avoid battery drain .*



## POWER MANAGEMENT

Not Applicable to Scout HS Users



### Saving Battery Power:

Hold the Power button on your Scout HX keypad for 4 seconds to enter Standby Mode. Repeat process to power unit back on.



- ☐ POWER
- ☐ MOTOR
- ☐ FORWARD
- ☐ REVERSE

### POWER LED Indicates power status:

- Steady on - battery power OK
- Fast Blink - change battery
- Slow Blink - Low Power Mode



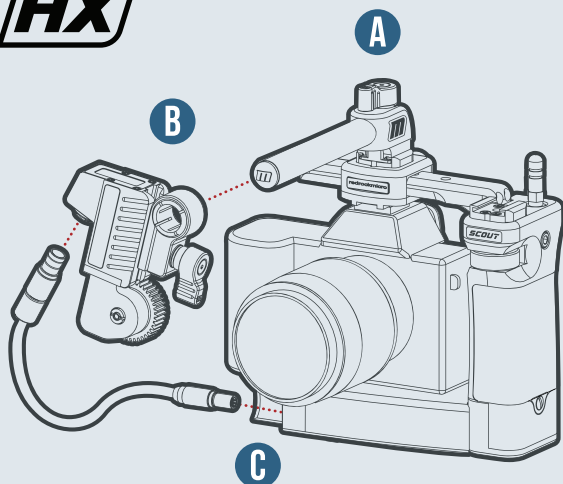
<http://start.redrockmicro.com>  
Tutorials, forums, customer support

**SCOUT**



# MICROREMOTE SETUP

HOW TO MOUNT A MICROREMOTE TO YOUR SPECIFIC SCOUT RIG



## SCOUT HX SETUP:

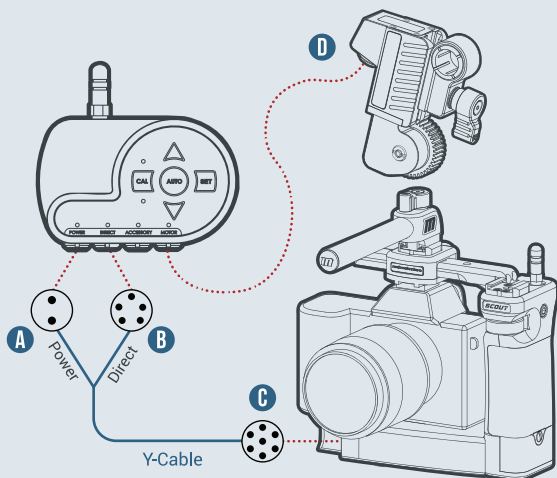
Attach RhinoMount (A) to the Scout at either of the two available Shoe Mounts. If using a lens without hardstops, add a Lens Gear now. Slide Torque Motor (B) onto RhinoMount.

Engage the teeth of the motor drive gear with the teeth of the lens or lens gear without applying any pressure. Mounting the gear too tightly may affect its performance and noise.

Plug cable into Motor and Scout Motor Port (C)



**UPDATE FIRMWARE:** To use Scout with your Basestation you must be running the latest firmware. Click [here](#) to update firmware.



## SCOUT HS SETUP:

Attach RhinoMount or Gimbal Rail clamp + rod(s) to the Scout. Mount your Basestation and Motor to the rod(s).

Connect the Y-Cable as follows:

- (A) 2-pin connector into the Basestation Power Port
- (B) 5-pin connector into the Basestation Direct Port
- (C) 7-pin connector into the Scout Motor Port

Plug your existing Motor Cable (D) into your Motor and Basestation Motor Port. Your microRemote can now be powered by the Scout's battery.



<http://start.redrockmicro.com>  
Tutorials, forums, customer support

**SCOUT**

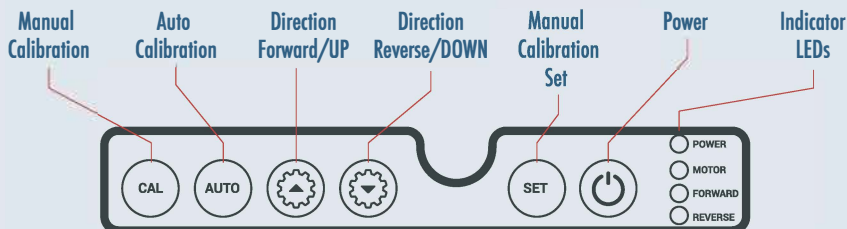


# MICROREMOTE SETUP

HOW TO CALIBRATE YOUR LENS ON THE SCOUT



With your Motor mounted and wired up, and with a charged battery installed in the Scout, you'll need to Calibrate your lens using the Scout HX's microRemote Keypad. Follow the instructions below.



Position Motor somewhere in the middle of the lens' focus range. Avoid starting at either end of the focus. Press POWER button to power on Scout.

**A**

**Auto Calibration:** use with cinema lenses or lenses with hard stops

Press the AUTO button. The motor will travel from one end of the lens to the other, then return to the position of the Fingerwheel Controller. Your lens is now calibrated.

**B**

**Manual Calibration:** use with DSLR lenses or lenses without hard stops

- Press the CAL button to enter manual calibration.
- The "Forward" LED will blink. Turn fingerwheel counterclockwise (looking from top).
- Press SET to set first focus point. The opposite LED will now blink, turn fingerwheel clockwise.
- Press SET to set the second focus point. Your lens is now calibrated.

Now you can use the Scout's integrated Fingerwheel to control the Torque Motor. Press SET button at any time to reverse motor direction.



Follow instructions for lens calibration as outlined in the microRemote User Guide. Click [here](#) to review. Once calibrated and properly wired with the included Y-Cable, you'll be able to use Scout's integrated Fingerwheel to control the Motor.



<http://start.redrockmicro.com>  
Tutorials, forums, customer support

**SCOUT**



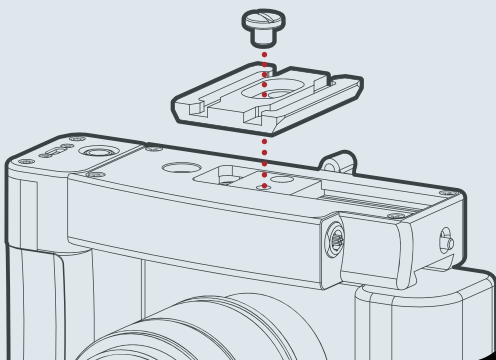
# GIMBAL USE

ADD A GIMBAL PLATE AND EXTERNAL FINGERWHEEL TO MAKE SCOUT GIMBAL-READY

## INTEGRATED RONIN-M GIMBAL PLATE



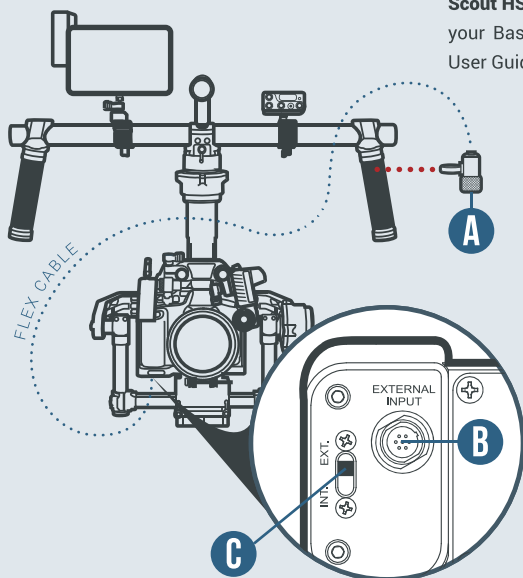
The Gimbal Plate allows you to slide the Scout into the Ronin-M without having to attach the DJI dovetail. To use, attach the Gimbal Plate to the bottom of the Scout as shown. Move the plate left/right and front/back to optimize rig balance potential when inserted into the gimbal. Make sure the Scout is in Compact Shooting Mode, and slide the Scout into the Ronin's camera mount until the safety lock engages.



## EXTERNAL FINGERWHEEL

The Scout supports an external fingerwheel for rigs where accessing the built-in fingerwheel is not possible or practical.

**Scout HS** users: connect an external fingerwheel to your Basestation as outlined in the microRemote User Guide. **Scout HX** users read below:



Mount Fingerwheel (A) to desired gimbal handgrip. Plug in cable: 3-pin /Fingerwheel to 5-pin/Scout. The Scout cable port (B) is located on bottom side directly underneath battery compartment. Flip Controller Switch (C) to the External (EXT.) Fingerwheel position as shown.

Note: Flipping switch will disengage Scout's Built-In Fingerwheel. Revert back to default switch position when not using secondary fingerwheel.



<http://start.redrockmicro.com>  
Tutorials, forums, customer support

**SCOUT**

